

Nurel Group (Developer) + Melis (Complex)

Melis residential complex

Location **Kyrenia, Karaođlanođlu**



About the project



Developer	Nurel Group
Start of sale	01.04.2023
Key handover	2024
Houses/blocks	5
Building floor	2 Min 2 Max
Units total	10 - 1+1, 20 - 2+1, 20 - 3+1

Distance to the sea - 1200 m

Distance to key locations:
 Airport 52 km. A 15-minute walk to the sea and 4 minutes to the supermarket. 15 minutes drive to the center of Kyrenia. One of the best British colleges, Necat British, is a 2-minute drive away.

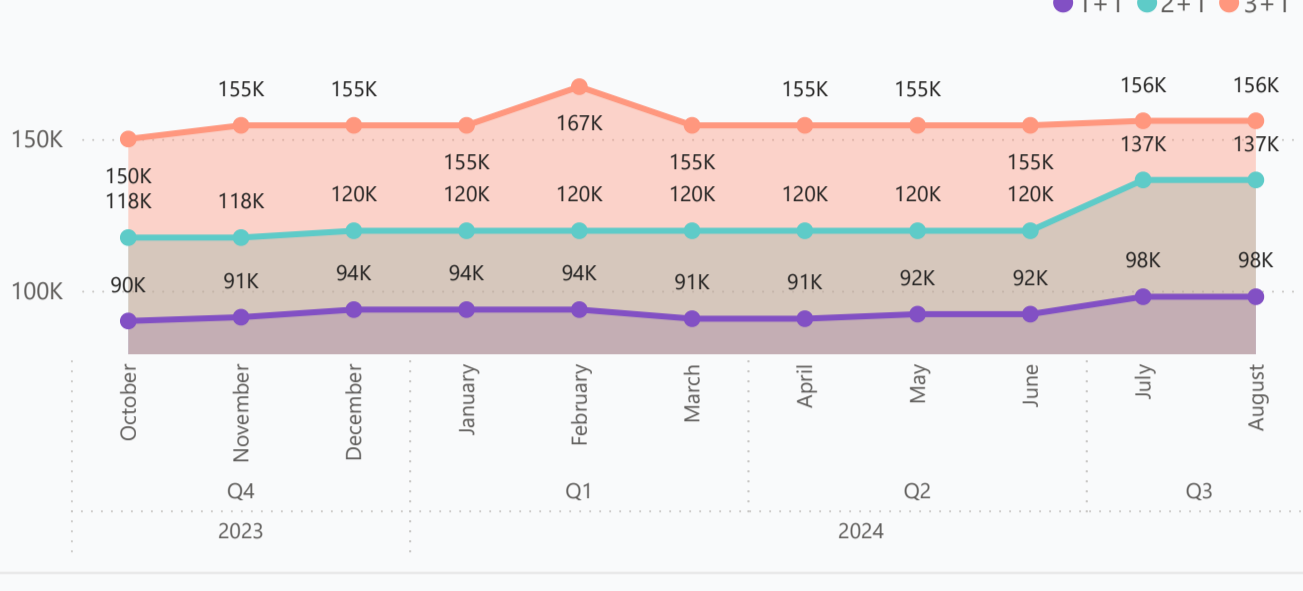
Melis is a premier residential complex located in the serene and picturesque region of Alsancak. This exquisite development, now completed, offers an unparalleled living experience, blending modern luxury with the tranquil charm of its surroundings. Crafted with meticulous attention to detail, Melis reflects the value of striving for excellence and innovation in design.

Complex infrastructure

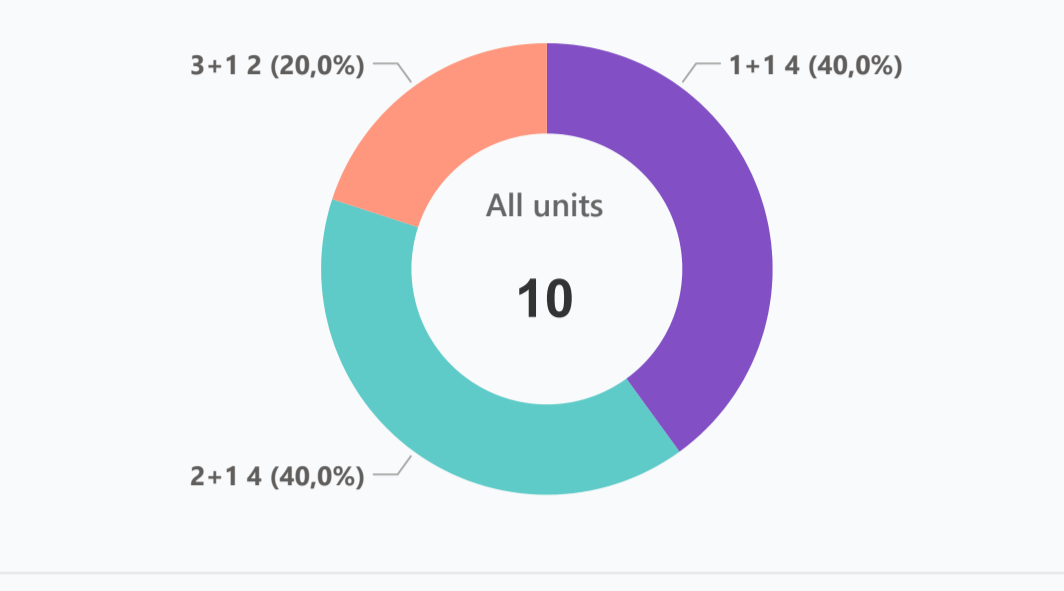
- Open pool
- Parking

Available units 10 / 53 total

Median price per unit, K GBP



Structure of available units



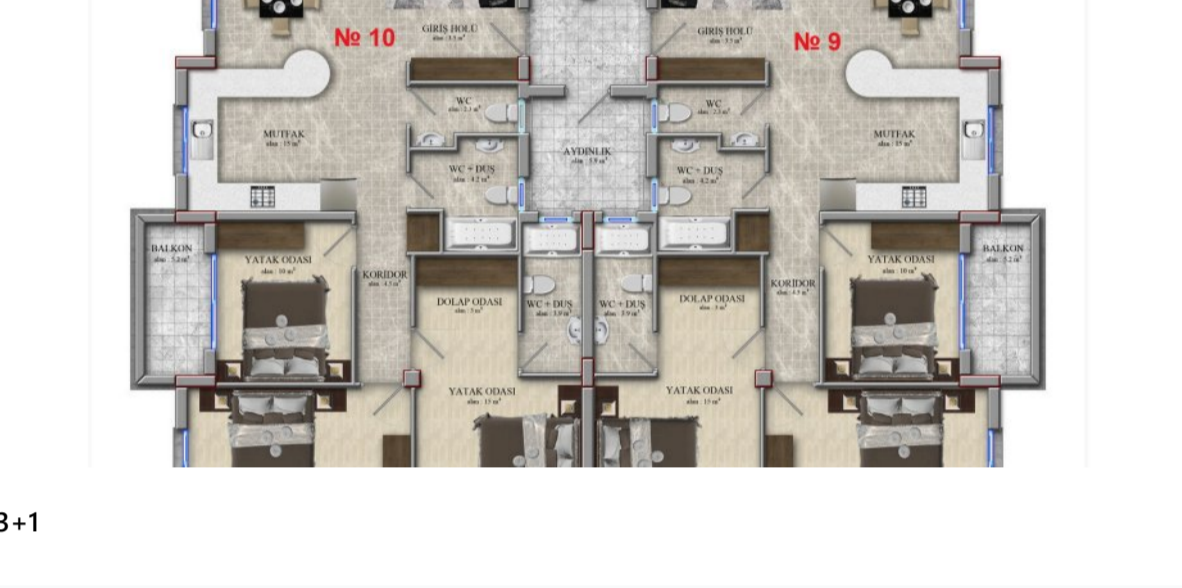
Plans



1+1



2+1



3+1

Payment plans

Deposit (non-refundable) Minimum 2500 GBP

Option	Down payment	Installments months	Discount	Offer
Option 1	100 %	-	-	-
Option 2	-	-	-	-
Option 3	-	-	-	-
Option 4	-	-	-	-

Special offer

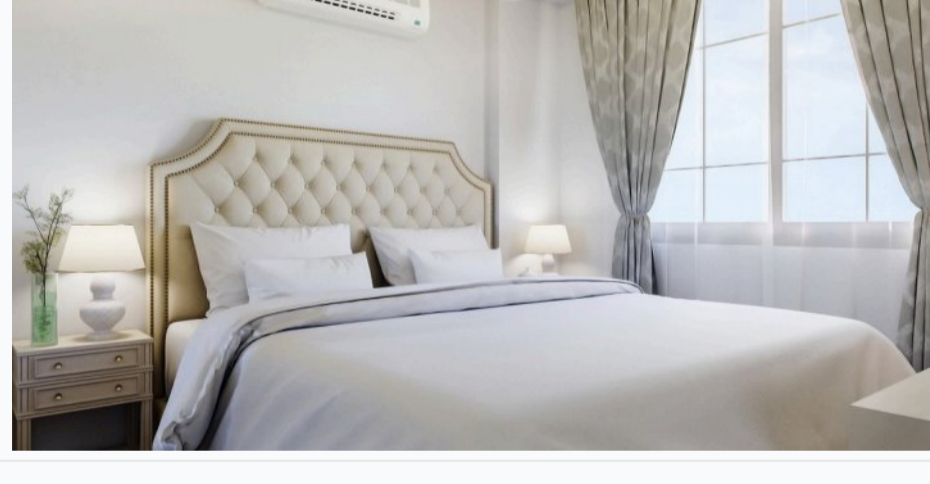
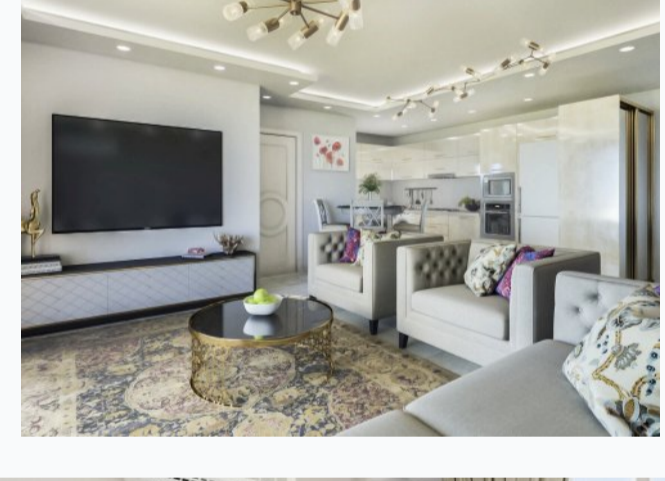
- Fully furnished design package
- Rental guarantee

- Trafo (Blank) GBP
- Resale -
- Maintenance fee -
- Rental services -

Details

Bedrooms	Subtype	Block	Unit №	Floor	View	Bathroom	Internal area, sq. m	Balcony/ Terrace, sq. m	Rooftop terrace, sq. m	Garden, sq. m	Gross covered area, sq. m	Current price, GBP	Price per sqm, GBP
1+1	Flat	A	5	01							56	104 000	1 857
1+1	Flat	A	8	01							56	104 000	1 857
1+1	Flat	C	5	01							56	85 000	1 518
1+1	Flat	D	5	01							56	92 000	1 643
2+1	Loft	A	1	0							85	130 000	1 529
2+1	Loft	A	4	0							85	130 000	1 529
2+1	Flat	A	6	01							74	143 000	1 932
2+1	Flat	A	7	01							74	143 000	1 932
3+1	Loft	A	2	0							110	156 000	1 418
3+1	Loft	A	3	0							110	156 000	1 418

Interior specification



- Ceramic flooring
- Double glazed windows
- Laminate flooring in the bedrooms

Exterior specification



Exterior specification

- Terracing with inbuilt lighting & power sockets

Location of complex

